

User's Guide

KeyGrabber USB

KeyGrabber Nano



Quick start

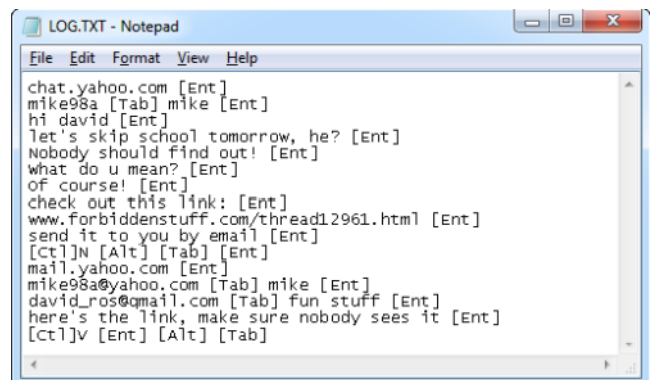
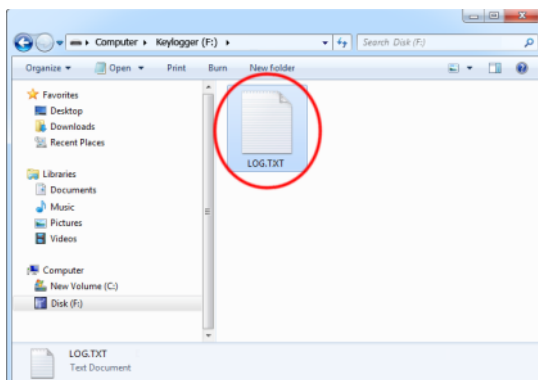
This section contains concise information on basic keylogger handling. If you need detailed instructions, please refer to sections Recording keystrokes and Viewing recorded data.



To record keystrokes, plug the device in-between the keyboard and USB port.

To view recorded data, plug the device in-between the keyboard and USB port, and press the 3-key combination **simultaneously** (by default K, B, S)

The keylogger will pop up as a removable drive, containing the file LOG.TXT. This file will contain all recorded keystroke data.



Recording keystrokes

Installation of the *KeyLogger USB* is quick and easy. Simply plug it in between the USB keyboard and the USB port. No software or drivers are required. The USB hardware keylogger will start recording all data typed on the keyboard to the internal flash disk. Once recording starts, new data will be appended to the end of the log file. The device is completely transparent for computer operation.



Disconnect the USB keyboard from the USB port at the computer or hub. This can be done even with the computer up and running.



Connect the hardware USB keylogger between the USB keyboard and the USB port. Keystroke logging will start automatically.

Note: If an external USB hub is being used, connect the keylogger between the hub and the USB keyboard.

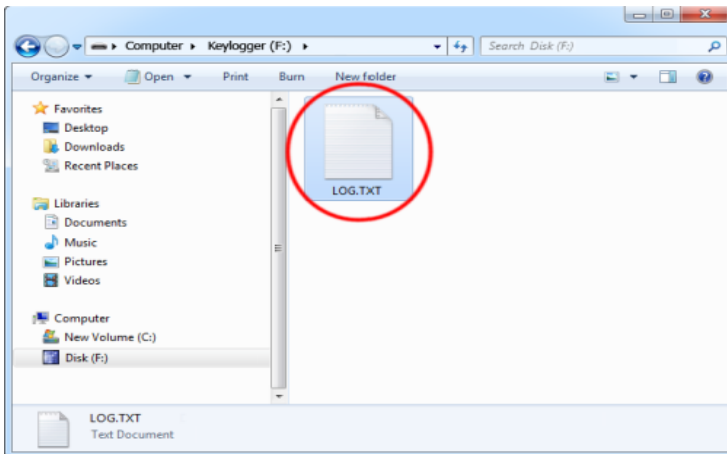
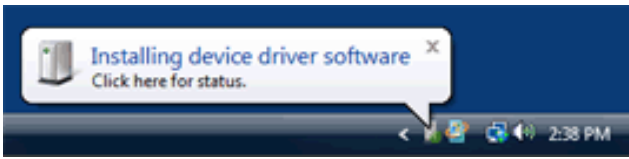
Viewing recorded data

Once keystroke data has been recorded, it may be retrieved on any computer with a USB port. This is done by switching to Flash Drive mode. The *KeyLogger USB* and keyboard should be connected in the same way, as during normal recording.



Each device has a built-in 3-key combination (by default K, B, S). Press these 3 keys **simultaneously** to trigger Flash Drive mode.

After a few seconds, the hardware keylogger will automatically get detected as a mass storage device. The operating system will use the standard built-in mass storage driver (*MS Windows 7* in the following examples).



Depending on the drive letters available, the device will be visible as a new drive, for example F:. Use the systems file manager to browse this disk (for example *Explorer*). The keyboard will be disconnected and unavailable, so the mouse must be used to browse the disk.

The removable disk will contain the file LOG.TXT with a text log of all captured data. Keystroke data is formatted in the same as it would appear on the screen, with special keys in brackets ([Ent], [Esc], [Del] etc.). This file can be viewed and searched with any text editor, such as *Notepad* or *MS Word*.

During Flash Drive mode, the USB keyboard is inaccessible, and usually the mouse is the only operating device. Therefore it is a good idea to copy the file to the hard drive, and restore standard operation. Erasing and editing the file LOG.TXT is obsolete, because the flash disk has a huge memory worth of years of intensive typing.

Switching back to standard mode can be achieved by a safe software removal of the flash disk. Use the systems standard disk removal procedure. For *MS Windows*, left-click on the *Safe Removal* icon in the system tray and select the appropriate drive. Some systems will require to unplug the reconnect the keylogger.

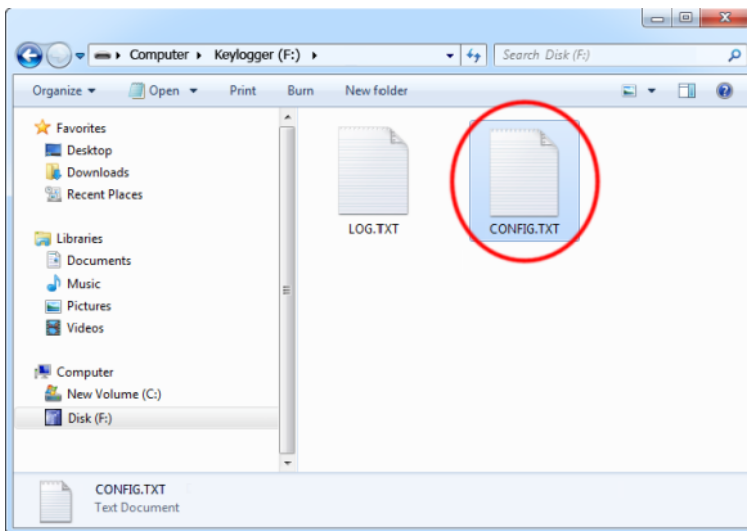
Note: During the first switch to Flash Drive mode, the operating system can ask for drivers. In such case choose automatic driver installation (usually default option).

Note: While in Flash Drive mode, the USB keyboard is disabled. Use the mouse to operate the system. If mouse operation is dependent on the keyboard (i.e. wireless desktop or USB keyboard with mouse attached to it), connect the keyboard/mouse combo to a different USB port after switching to Flash Drive mode.

Configuration options

The *KeyLogger USB* may be configured through the file CONFIG.TXT, placed in the Flash Drive root folder. Use any text editor to prepare such a configuration file, containing the following text:

```
Password=KBS  
LogSpecialKeys=Medium  
DisableLogging=No
```



Copy this file to the root folder in Flash Drive mode. The new configuration will be loaded on next power-up.

The following list presents the most common configuration options. All variable and value strings are case insensitive.

Password sets the 3-key combination for triggering Flash Drive mode. Any three-letter key combination is allowed (sequence is irrelevant). The password setting is national-layout independent. Default value is *KBS*.

LogSpecialKeys sets the logging level for special keys, such as Enter, Escape, F1...F12 etc. Special keys are logged in brackets, i.e. [Ent]. Allowed values are *None* (only text is logged), *Medium* (text with basic function keys are logged), and *Full* (text with all special keys are logged). Default value is *Medium*.

DisableLogging allows to disable keystroke logging, however does not affect mode switching. Allowed values are *Yes* (logging disabled) and *No* (logging enabled). Default value is *No*.

DisableLayout allows disabling the currently loaded layout, without having to delete the layout file. Allowed values are *Yes* (layout disabled) and *No* (layout enabled, if present). Default is *No*.

Encryption enables flash disk encrypting. Encryption will ensure full confidentiality of the stored data, even if the device is physically tampered with. Allowed values are *Yes* (encryption enabled) and *No* (encryption disabled). Default is *No*.

Important: toggling the encryption setting will format the entire flash disk. All data will be lost, including the configuration and layout files!

An example configuration file contents is shown below:

```
Password=SVL  
LogSpecialKeys=Full
```

Encryption=Yes

A full list of available parameters with descriptions is available below.

Basic parameter list

Parameter	Values	Example	Description
Password	3-character password (default KBS)	Password=SVL	Three-character key combination for activating Flash Drive mode.
LogSpecialKeys	None Medium (default) Full	LogSpecialKeys=Full	Special key logging level.
DisableLogging	Yes No (default)	DisableLogging=Yes	Keystroke logging disable flag.
DisableLayout	Yes No (default) Menu	DisableLayout=Yes	National layout disable flag (see section National keyboard layouts).

Advanced parameter list (use only when you know what you're doing!)

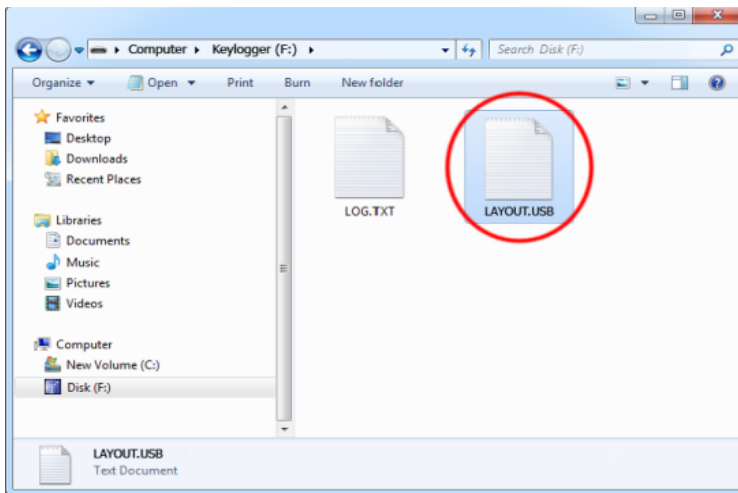
Parameter	Values	Example	Description
Encryption	Yes No (default)	Encryption=No	Flash drive encryption setting (caution: changing this value will re-format the flash drive).
SupportReportProtocol	Yes No (default)	SupportReportProtocol=No	Report protocol support flag.
CheckShortFrame	Yes (default) No	CheckShortFrame=Yes	Short frame check flag.
CheckModifierByte	Yes (default) No	CheckModifierByte=No	Modifier byte check flag.
FrameFilter	Filter value (range 0...255, default 98)	FrameFilter=226	Frame filter value.
KeyboardSpeed	Auto (default) Full Low	KeyboardSpeed=Auto	USB keyboard speed setting.
CheckOverflow	Yes No (default)	CheckOverflow=Yes	Overflow check flag.

National keyboard layouts

It is possible to enable a national layout for language-adapted keyboards, such as French, German etc. This will allow national characters to get logged properly (including those with Alt Gr), such as ö, æ, ß, ó etc. The following example demonstrates the advantages of applying the German national layout.

Text logged without layout
Keylogger)PS-2 / USB=

Text logged with layout
Keylogger (PS/2 & USB)



To enable a national layout, the appropriate layout file named LAYOUT.USB must be placed on the flash disks root folder. The file must be copied in Flash Drive mode. Layout files may be obtained from the device's internal memory where are stored as a zip archive.

To enable the layout, safely remove the flash disk. On power-up, the layout file will be loaded automatically.

Specifications

Power supply – 4.5 V – 5.5 V DC (drawn from the USB port)

Power consumption – 65 mA (0.33 W)

Keyboard support – USB HID-compatible keyboard (Low-speed, Full-speed)

Maximum burst log speed - 500 byte/s (approx.)

Maximum continuous log speed - 100 byte/s (approx.)

Memory capacity – 16MB to 2GB

Data retention - 100 years

Maximum log read speed – 150 kB/s

Dimensions inc. connectors (L x W x H) - 53 mm x 20 mm x 12 mm (2.1" x 0.8" x 0.5")

All products come with 1 year warranty against manufacturer defects. Defect products must be shipped by the customer. All warranty repairs and delivery to the customer will be paid by the distributor.

List of special keys

[Esc]	-	Escape	[Prn]	-	Print Screen
[F1]	-	F1	[End]	-	End
[F2]	-	F2	[Scr]	-	Scroll Lock
[F3]	-	F3	[Up]	-	Up
[F4]	-	F4	[Dwn]	-	Down
[F5]	-	F5	[Lft]	-	Left
[F6]	-	F6	[Rgh]	-	Right
[F7]	-	F7	[Num]	-	Num Lock
[F8]	-	F8	[-N]	-	- (num)
[F9]	-	F9	[+N]	-	+ (num)
[F10]	-	F10	[.N]	-	. / Delete (num)
[F11]	-	F11	[/N]	-	/ (num)
[F12]	-	F12	[*N]	-	* (num)
[Ct1]	-	Control	[0N]	-	0 / Insert (num)
[Alt]	-	Alt	[1N]	-	1 / End (num)
[Ins]	-	Insert	[2N]	-	2 / Down (num)
[Hom]	-	Home	[3N]	-	3 / Page Down (num)
[PUp]	-	Page Up	[4N]	-	4 / Left(num)
[PDn]	-	Page Down	[5N]	-	5 (num)
[Del]	-	Delete	[6N]	-	6 / Right (num)
[Win]	-	Win	[7N]	-	7 / Home (num)
[Aps]	-	Apps	[8N]	-	8 / Up (num)
[Cap]	-	Caps Lock	[9N]	-	9 / Page Up (num)
[Ent]	-	Enter	[Pwr]	-	Power
[Bck]	-	Backspace	[Slp]	-	Sleep
[Tab]	-	Tab	[wke]	-	wake

Legal disclaimer

Manufacturer or distributor does not take responsibility for any damage, harm or legal actions caused by misuse of its products. The user should follow the guidelines contained in this document, otherwise no liability will be assumed. It is the user's responsibility to obey all effective laws in his/her country, which may prohibit usage of keylogging products. Please also consider, that not knowing the law does not allow to not obeying it. A good example is the U.S. Department of Justice Letter on Keystroke Monitoring and Login Banners, according to which a clear notice should be displayed, warning that user keystrokes may be logged. Please check with your legal representative for logging requirements in your country.

You should not use this device to intercept data you are not authorized to possess. Most countries recognize this as a crime. Please consult a legal representative for logging requirements in your country.

ELECTROWARE
Sw. Elzbiety 10
43-100 Tychy
POLAND
WWW.ELECTROWARE.PL
electroware@electroware.pl
tel +48576881595



✓RoHS

Copyright © 2018. All rights reserved. Made in EU (Poland)